

The Original Glass on Glass Vaporizer!

Vapolution Vaporizer

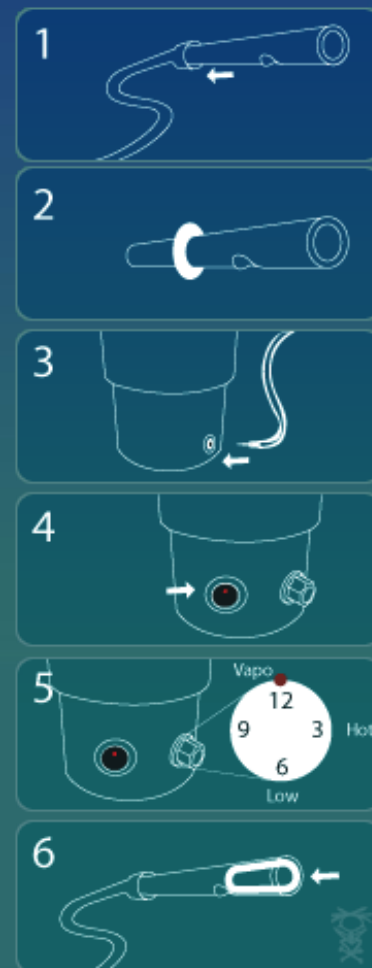
Home Vaporizer & Accessories Online Store How to Use Vapormonials Contact & Support Shops & Links

FAQ'S

- Frequently Asked Questions about Vaporizers
- Vaporizer Ordering Questions
- Wholesale Questions
- Vaporizer Problems
- Vaporizer Shipping

Vapolution Vaporizer Instructions

Download our new instructions in PDF format [here](#)



1. All Vapolution bowls are dimpled about 1 inch from the end. The dimple acts like a screen. The end closest to the dimple is where you load your herbs. Insert the end AWAY from the dimple into the tubing. If necessary, boil some water. Submerge one end of the tubing into boiling water for 3-5 seconds. The bowl will slip into the softened tubing with ease.
2. (a) Slip the white retaining washer over the straight bowl. Slide it up until it touches the food-grade tubing.
(b) Gently insert the bowl into the top of the vaporizer. The bowl will stop when it touches the bottom of the heater. Position the washer so it prevents the bowl from touching the bottom of the heater. A 1/4" gap off the heater bottom is suggested.
3. The power jack on the back of the vaporizer will accept the Vapolution power supply, car adapter or the optional battery pack. Plug in the vaporizer.

4. Flip the switch up to turn the vaporizer on. The switch will light up when the vaporizer is on.
5. The lowest temperature setting is at 6 o'clock. The highest setting is at 4 o'clock. A quick start-up can be achieved by turning the vaporizer on high. After 5 minutes of pre-heating, turn the vaporizer down to your preferred setting. 12 o'clock is the most common setting for vaporizing. The Vapolution Vaporizer is designed to run for up to 8 hours continuously without overheating or burning out. Some users leave the vaporizer on their preferred setting all the time.
6. Loading the bowl correctly is the most important step. DO NOT grind your herbs. Break off 1-3 small plant pods. Give the plant pods a squeeze and roll them in between your fingers. Make the plant pods into a vapor pellet. Gently slide the formed pellet into the bowl. If you have to force it, the pellet is too big. Good airflow is important. If you load it too tight, you will get no vapor. If you load it too loose, it will fall out. Loading the bowl takes a little practice.
7. Place the loaded bowl into the top of the pre-heated vaporizer. Some users like to count to 5 before they begin to inhale vapor through the tube. A slow and steady draw will extract the best vapor. Draw until you are out of breath. Hold it in and then exhale. You will see visible vapor. You can repeat this process 3-7 times depending on the quality of your herbs and your temperature setting.
8. The plant material will turn golden to dark brown once it has been vaporized. The taste will also change from sweet and good to a bitter flavor that most describe as tasting like burnt popcorn. Vaporizing the same herb for too long, or on a setting above 2 o'clock, will turn the vapor pellet black and can cause the VAPOR CHOKE. Stay in the safe zone (10 o'clock to 2 o'clock on the dial) until you are intimate with your Vapolution Vaporizer.
9. The vaporized herb can be discharged from the bowl by blowing through the tube. Place the bowl into a discharge receptacle and blow. The spent vapor pellet will shoot out. Wait 30 seconds to 1 minute for the bowl to cool.

Cleaning Instructions

Bowls: Submerge the bowls in rubbing alcohol for 8-12 hours. Rinse with warm water. Repeat as necessary.

Heater: Allow the vaporizer to cool for at least 30 minutes. Dip a Q-tip in rubbing alcohol and GENTLY swab out the heater receptacle. Repeat as necessary. Use a dry Q-tip to swab out any remaining alcohol residue.

Food-Grade Tubing: The tubing is not cleanable, but can be cut shorter to eliminate the yellowing that occurs over time.

Warranty

The Vapolution Vaporizer is covered by a Limited Lifetime Warranty. Manufacturing defects will be repaired free of charge for the first 90 days. After 90 days, any repair is \$25USD except for the glass heater. The glass heater is covered by our \$50USD replacement program. Please contact Vapolution if your vaporizer ever needs repair or replacement.

Warning

- Never force a bowl into the vaporizer. This could break the glass heater.
- Always use the retaining washers provided with the straight bowls.
- DO NOT leave the vaporizer on unattended.

Disclaimer

By Using Your Vapolution Vaporizer, You Agree To The Following:

1. The Vapolution Vaporizer is for legal use only.
2. DO NOT operate a motor vehicle while using the Vapolution Vaporizer.

- - [Home](#) | [Vaporizer & Accessories](#) | [How to Use](#) | [Vapormonials](#) | [Contact & Support](#) - -

- - [Pocket Vaporizer](#) | [Online Store](#) | [Company Policy](#) - -

©2008 Vapolution :: All Rights Reserved :: web site by [entropic studio](#)